

Passalid Beetles (Coleoptera, Passalidae) Collected from Bhutan, with
Description of the Male Genitalia of *Tiberioides austeni* GRAVELY¹⁾

Masahiro KON

School of Environmental Science, The University of Shiga Prefecture,
Hassaka-cho, Hikone, 522–8533 Japan,

Masahiro TANAKA

3–10–7 Mikatadai, Nishi-ku, Kobe, 651–2277 Japan

and

Kunio ARAYA

Graduate School of Human and Environmental Studies, Kyoto University,
Yoshida, Sakyo, Kyoto, 606–8501 Japan

Abstract Seven species of passalid beetles are recorded from Bhutan. The male genitalia are described and illustrated for the first time for *Tiberioides austeni* GRAVELY.

Relatively little is known about the passalid fauna of Bhutan, although a few species were recorded by GRAVELY (1914) and ARROW (1950): *Taeniocerus bicuspis* (KAUP), *Tiberioides kuverti* (ARROW), *Ophrygonius cantori* (PERCHERON), *Aceraius grandis* (BURMEISTER), *Leptaulax dentatus* (FABRICIUS).

Recently, we had an opportunity to examine some passalid specimens collected from Bhutan, and recognized seven species. We record herewith the materials and describe the male genitalia of *Tiberioides austeni* GRAVELY for the first time. We adopt the terminology of LINDROTH (1957) in the description of male genitalia and refer to HINCKS and DIBB (1935) for the distribution of each species.

Tiberioides austeni GRAVELY

(Figs. 1–3)

Tiberioides austeni GRAVELY, 1914, Mem. Ind. Mus., **3**, p. 216.

1) This study is supported in part by Grants-in-Aid from the Ministry of Education, Science, Sports and Culture, Japan (Nos. 10041166, 11833007, 11833014).

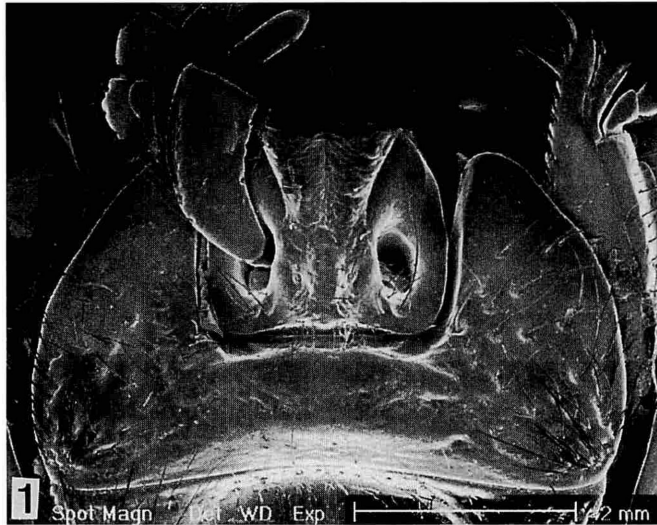
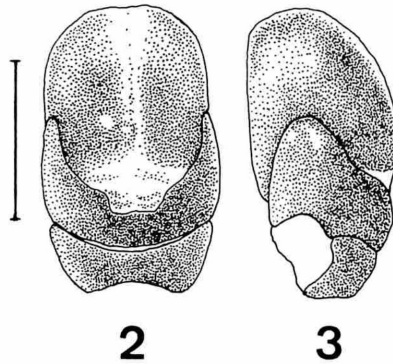


Fig. 1. Ligula and mentum of *Tiberioides austeni* (scale: 2 mm).



Figs. 2–3. Male genitalia of *T. austeni* (scale: 2 mm), ventral view (2), and left lateral view (3).

Brief description. Mentum almost flat and with transverse roughened area in central portion, without transverse carina in postero-central portion, lateral margins converging anteriorly (Fig. 1). Side of elytron shining; lateral grooves of elytron narrow, with simple punctures.

Penis of male genitalia large, with longitudinal membranous area along middle line on ventral side, the area broadened distally in ventral view; parameres united on ventral side, as long as basal piece at middle in ventral view, distal margin gently curved and with a small quadrilateral nick at middle, latero-proximal end pointed proximally like a hook; distal margin of basal piece gently curved in ventral view, lateral margins divergent distally (Figs. 2–3).

Specimen examined. 1 ♂, E. Mera, 2,350 m in alt., Bhutan, 5~15-IX-1998.

Distribution. Assam, Bhutan.

***Tiberioides kuwerti* (ARROW)**

Tiberius kuwerti ARROW, 1907, Trans. ent. Soc. London, **1906**, p. 446.

Specimen examined. 1 ♂, Bhutan, 22-IX-1996, S. TANIMOTO leg.

Distribution. E. Himalayas (including Bhutan), Myanmar.

***Ophrygonius birmanicus* GRAVELY**

Ophrygonius birmanicus GRAVELY, 1914, Mem. Ind. Mus., **3**, p. 226.

Specimen examined. 1 ♀, E. Mera, 2,350 m in alt., Bhutan, 5~15-IX-1998.

Distribution. Bhutan, Myanmar, Indochina.

***Ophrygonius convexifrons* ZANG**

Basilianus cantori convexifrons ZANG, 1904, Zool. Anz., **27**, p. 698.

Specimen examined. 1 ♀, Bhutan, 22-IX-1996, S. TANIMOTO leg.

Distribution. Bhutan, Assam, Myanmar, Vietnam.

***Aceraius grandis* (BURMEISTER)**

Passalus grandis BURMEISTER, 1847, Handb. Ent., **5**, p. 463.

Specimens examined. 8 ♂♂, 8 ♀♀, E. Mera, 2,350 m in alt., Bhutan, 5~15-IX-1998.

Distribution. E. Himalayas (including Bhutan), Myanmar, Indochina, China, Taiwan, Malay Peninsula, Sumatra, Java, Borneo, Philippines.

***Leptaulax bicolor* (FABRICIUS)**

Passalus bicolor FABRICIUS, 1801, Syst. Eleuth., **2**, p. 256.

Specimen examined. 1 ♂, E. Mera, 2,350 m in alt., Bhutan, 5~15-IX-1998.

Distribution. Sri Lanka, India, E. Himalayas (including Bhutan), Myanmar, Indochina, China, Malay Peninsula, Sumatra, Java, Borneo, Philippines, Sulawesi, Moluccas, New Guinea, Australia.

***Leptaulax dentatus* (FABRICIUS)**

Passalus dentatus FABRICIUS, 1792, Ent. Syst., **1**(2), p. 241.

Specimen examined. 1 ♀, E. Mera, 2,350 m in alt., Bhutan, 5~15-IX-1998.

Distribution. India, E. Himalayas (including Bhutan), Myanmar, Indochina, China, Taiwan, Malay Peninsula, Sumatra, Java, Borneo, Philippines, Sulawesi, Moluccas, New Guinea, Australia.

In closing this report, we express our hearty thanks to Mr. S. TANIMOTO for giving us specimens.

要 約

近 雅博・田中正浩・荒谷邦雄：ブータンから採集されたクロツヤムシ，ならびに *Tiberioides austeni* GRAVELY の雄交尾器の記載。—— ブータンから採集されたクロツヤムシ7種を記録した。また，*Tiberioides austeni* GRAVELY の雄交尾器を図示して記載した。

References

- ARROW, G. J., 1950. Coleoptera, Lamellicornia, Lucanidae and Passalidae, vol. IV. *In the: Fauna of India including Pakistan, Ceylon, Burma and Malaya.* xi+274 pp., 12 pls. Taylor & Francis, London.
- GRAVELY, F. H., 1914. An account of the Oriental Passalidae based primarily on the collection in the Indian Museum. *Mem. Ind. Mus.*, **3**: 177–353.
- HINCKS, W. D., & J. R. DIBB, 1935. Passalidae. *In* JUNK, W., & S. SCHENKLING (eds.), *Coleopterorum Catalogus*, pars 142: 1–118. W. Junk, Berlin.
- LINDROTH, C. H., 1957. The principal terms used for male and female genitalia in Coleoptera. *Opusc. ent., Lund*, **22**: 241–256.